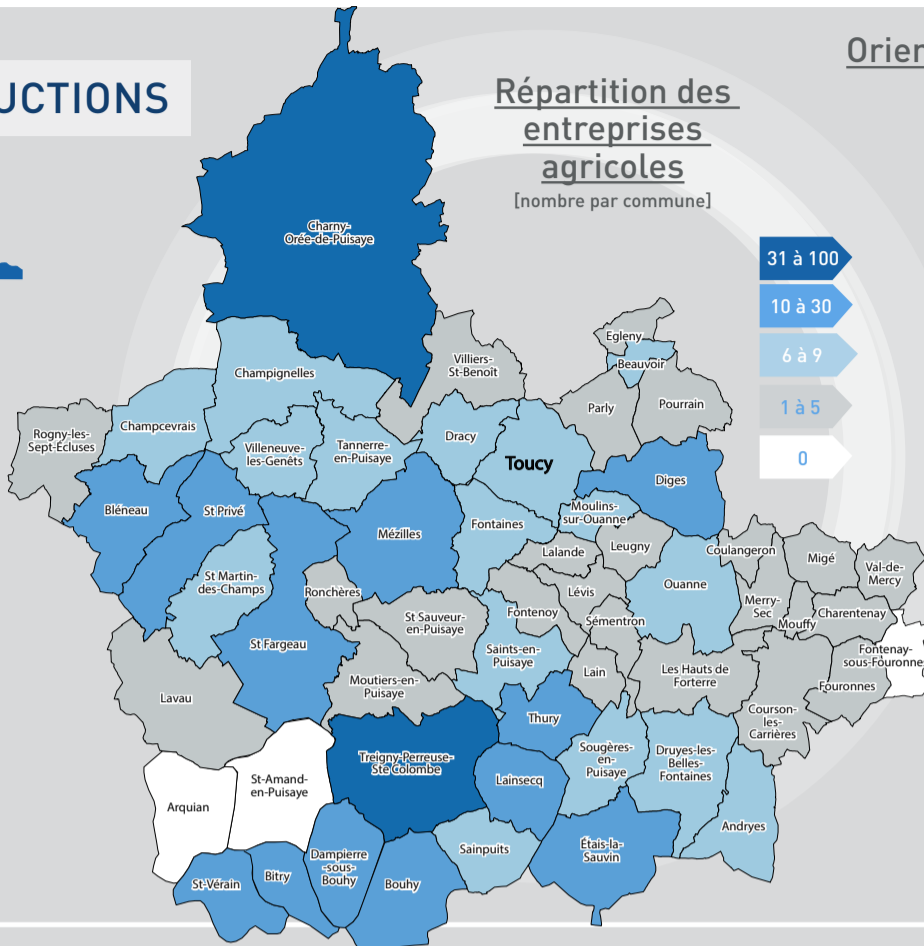
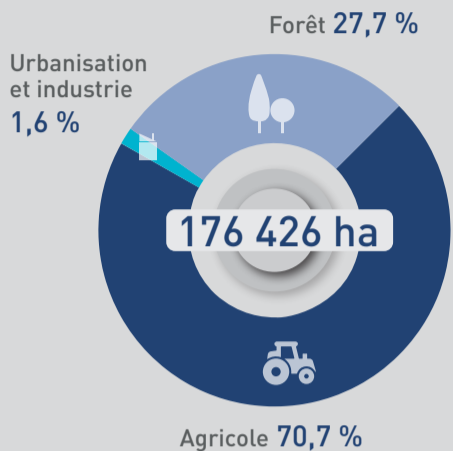


TERRITOIRES & PRODUCTIONS

855 ENTREPRISES AGRICOLES
[- 24] par rapport à 2022

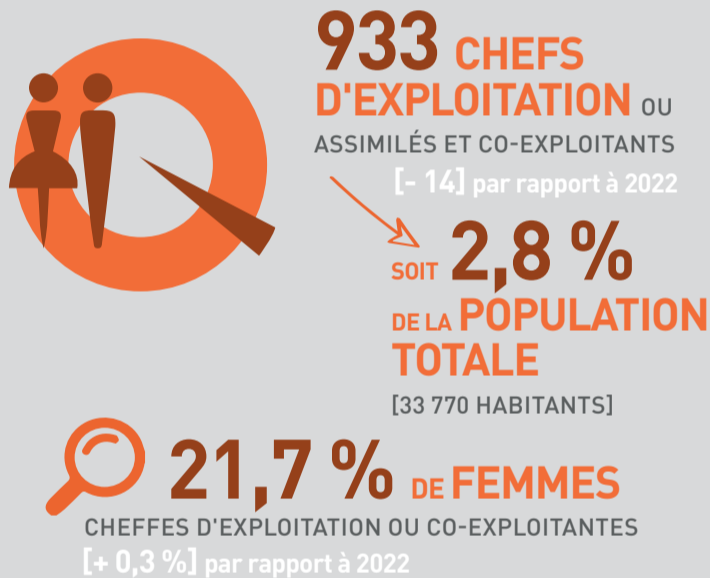
Répartition de la surface totale



Orientations principales des productions



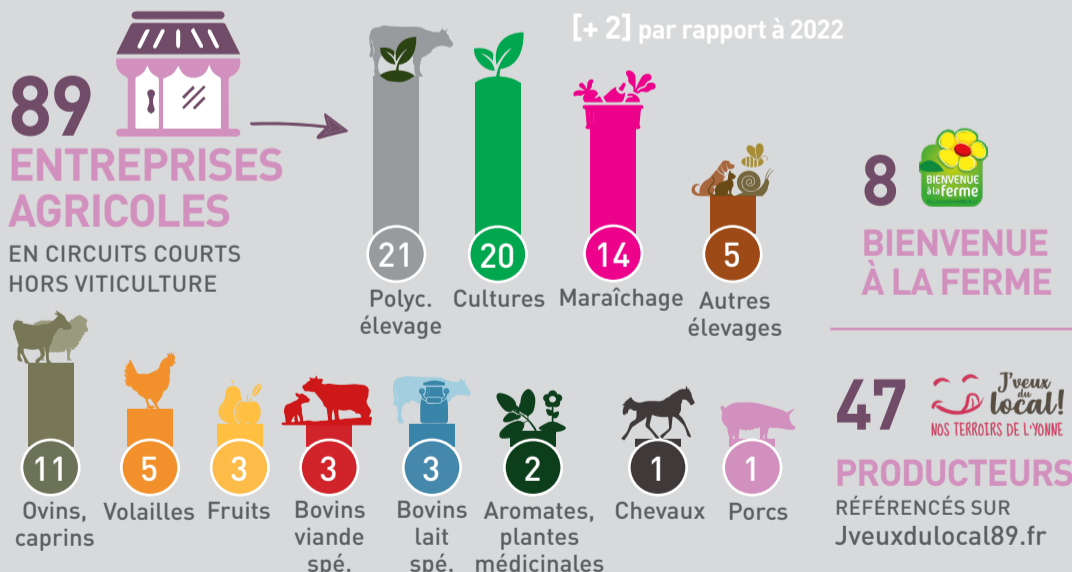
DES HOMMES & DES FEMMES



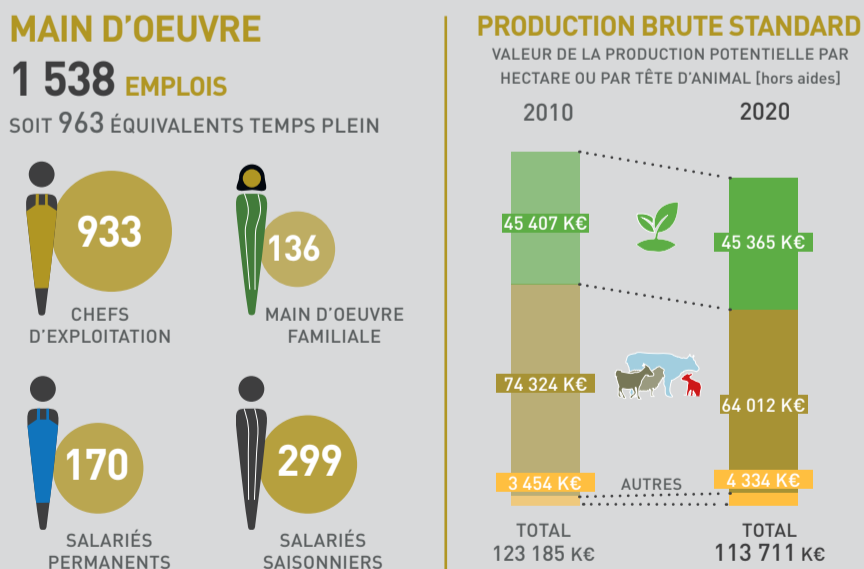
RENOUVELLEMENT DES GÉNÉRATIONS



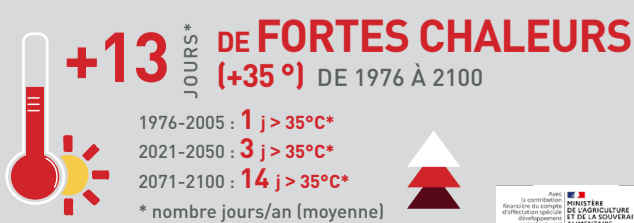
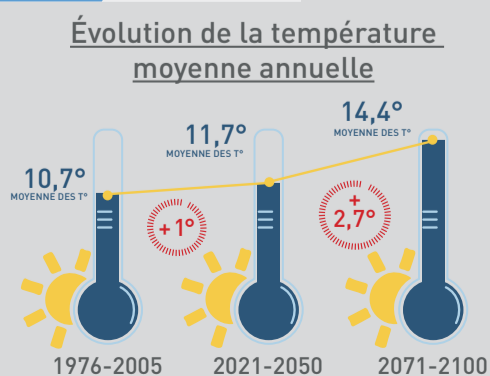
ALIMENTATION DE PROXIMITÉ



DONNÉES ÉCONOMIQUES



CLIMAT



CERTIFICATION ET QUALITÉ

