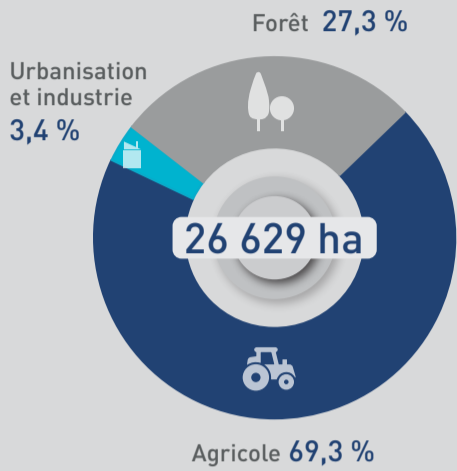


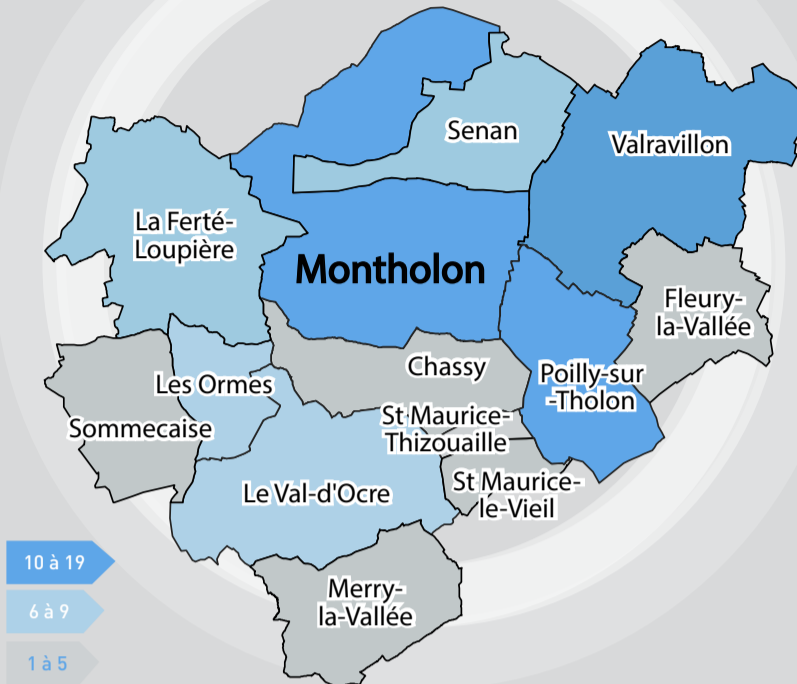
**TERRITOIRES & PRODUCTIONS**

**142 ENTREPRISES AGRICOLES**  
[+2] par rapport à 2022

Répartition de la surface totale



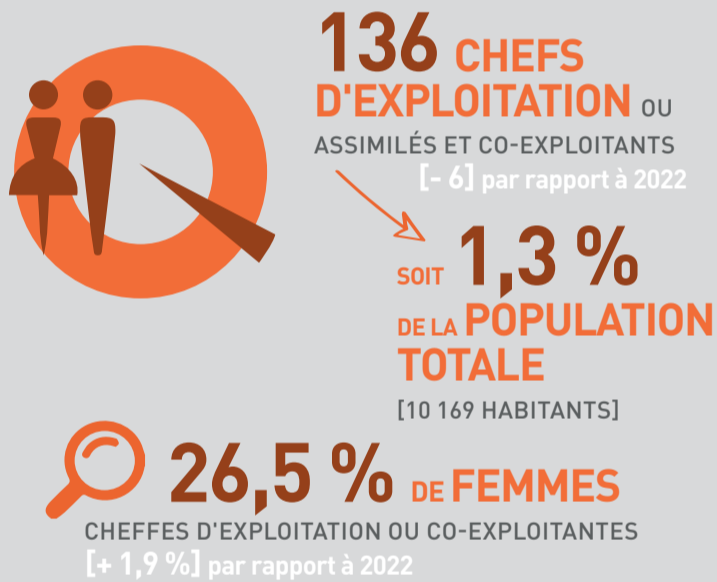
Répartition des entreprises agricoles [nombre par commune]



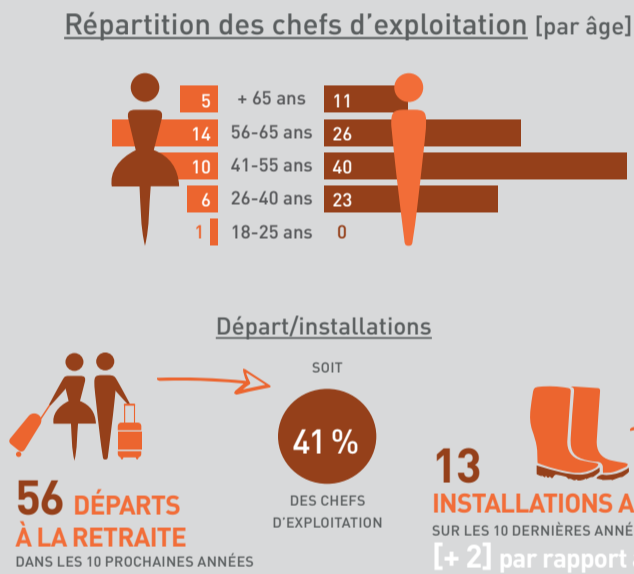
Orientations principales des productions



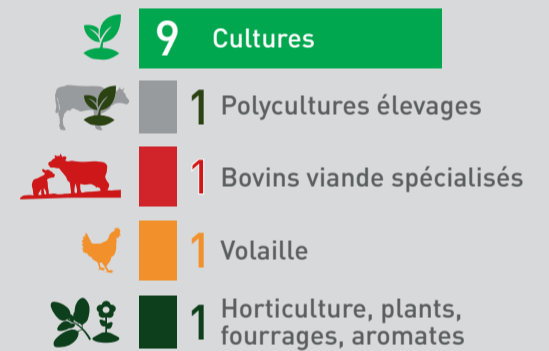
**DES HOMMES & DES FEMMES**



**RENOUVELLEMENT DES GÉNÉRATIONS**



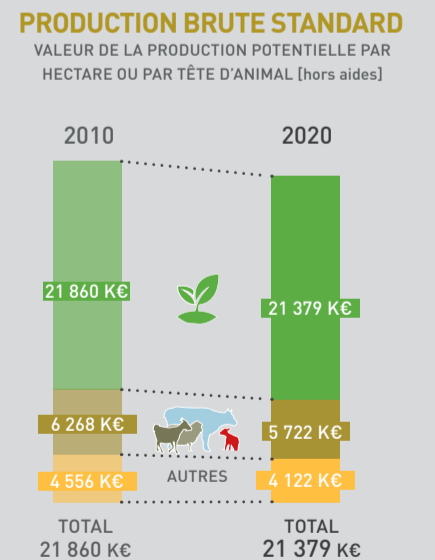
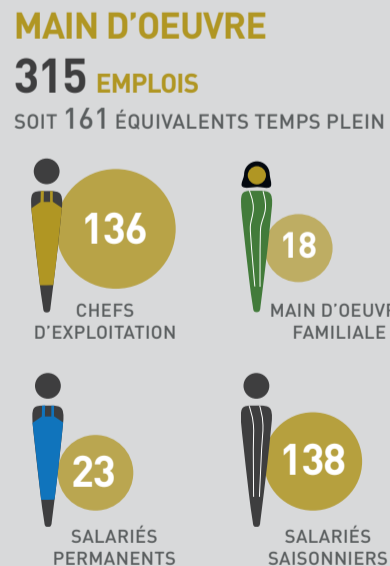
Orientation des installations aidées [par production] DONT 4 EN AB



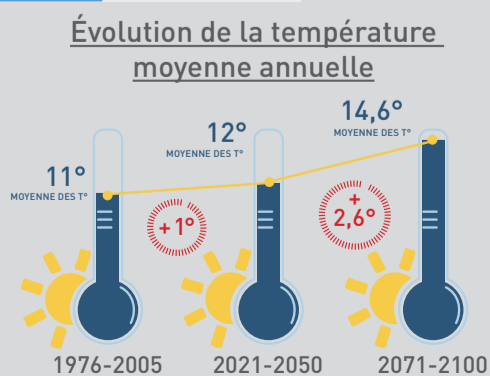
**ALIMENTATION DE PROXIMITÉ**



**DONNÉES ÉCONOMIQUES**



**CLIMAT**



**CERTIFICATION ET QUALITÉ**

